



Billet Hood Pin Set

S1MS-16892-K INSTALLATION INSTRUCTIONS (Page 1 of 2)

APPLICATION: 1965-68 Mustang

Thank you for purchasing the Scott Drake Billet Hood Pin Set.

NOTICE: This installation requires drilling holes through your hood, and if done improperly could cause unwanted damage to your hood. If you are not confident in your ability to successfully and safely complete this installation, we highly recommend having this work performed by a certified technician.

TOOLS REQUIRED:

- Die grinder
- Drill and assorted bits
- File for holes
- wrench 3/4"
- Phillips screwdriver
- Punch

PREPARATION:

Always start this type of project with a properly aligned hood and good hinges. Before starting, you will need to determine which direction you want the pins to pull out from. Either or to the side (Figure 1a) toward the front (Figure 1b). You will also need to decide where on the hood you want the hood pins to be located. Take into consideration the angle of the hood's surface and any obstructions under the hood. *Note: if you position the pins toward the front, like in Figure 1b, depending on the hood location you will need to make sure the pin is installed at an angle that will allow the lynch pin to insert all the way through properly.*

Note: These installation instructions use the hood bumper bracket at the radiator support as the hood pin location. This may not be where you want the pins to protrude on your hood. This hood pin set was designed to use the hood bumper brackets, any alternative methods of installation are at the installer's discretion.

We also recommend removing the grille before starting the installation, this should make installation of the hood pins much easier.

INSTALLATION INSTRUCTIONS:

Step 1: Move the front hood bumpers

Remove the front hood bumpers from both sides of the radiator support (Figure 1a). Reinstall the bumpers in place of the front fender bolts on each side (Figure 1b).

After the bumpers are installed, check the hood with the fenders to make sure they are properly lined up. Adjust the bumpers as required.

Step 2: Mark the underside of the hood

A marker, such as the type in Figure 2a, can be used to mark the underside of the hood. Insert the marker in the hood bumper bracket and close the hood. Repeat this several times pushing the hood down at different locations to check hood flex.

While we recommend the above method for marking the underside of the hood, there are various other methods that include: loosely installing the hood pins and using masking tape, a thin layer of clay on the underside of the hood, or chalk on the top of the hood pin.

Step 3: Install pins in the hood bumper bracket

After the hood has been marked, the holes in the radiator support bumper bracket need to be enlarged slightly with a die grinder. Make the holes just large enough to insert the hood pins (Figure 3a).



Figure 1a



Figure 1b



Figure 1a

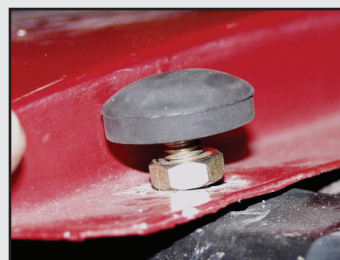


Figure 1b



Figure 2a



Figure 3a

IS.16892-BILLET

Secure both pins in the brackets and screw them down to their shortest length. Close the hood to check where the pins touch the underside and where your mark was made. *Note: the pins should be at an angle towards the front of the car, not straight up and down.*

Step 4: Drill holes in the bottom of the hood

Start by drilling holes in the bottom of the hood (Figure 4a). **Important: Only drill through the bottom side, not into the top sheet metal.** Check the locations as you go. The pins should line up with the holes.

Using one of the Delrin slider bushings, mark the oval shaped hole (Figure 4b). With a die grinder, open the holes to the shape. The pins should now start to clear the edges of the holes.

Note how the hood closes and where the pins travel through the hood. The oval hole should be longer toward the front of the hood so the pins clear the bottom sheet metal of the hood. (Figure 4c)

Step 5: Adjust the size of the hole

Lengthen the pins a little more now. As you close the hood, they will start to make a small dent in the surface of the hood. Mark these spots and drill through the hood (Figure 5a).

Using the Delrin bushing again, mark the shape of the holes and enlarge the holes with a die grinder. Note: the pins should not touch any edge of the holes. Note: The oval hole on the top of the hood should be longer towards the back of the hood, this is opposite of the holes in the bottom.

Step 6: Position the Delrin Bushing & Adjust the pin

After the holes are the proper size and shape, lay the billet plate and Delrin bushing over the pin. Note: the Delrin bushing should be positioned to the back of the billet plate (Figure 6a), for proper clearance.

Adjust the length of the pin so that when the lynch pin is inserted in the pin's hole, the hood is stable. The lynch pin should not be loose nor should it be so tight that downward pressure is required to release it.

Check the bumpers that were relocated to the front of each fender to make sure they are providing support and keeping the top of the hood aligned with the top of the fender.

Step 7: Secure the billet plate

After the large pins are properly adjusted and tightened, and the billet plates are properly aligned, drill holes at each of the mounting screw locations. Add the foam seals provided and secure the plate assemblies with the screws provided.

Secure the other end of the lynch pin's cable to a location under the hood using a sheet metal screw or rivet. This location is a personal choice. Consider the length of cable you want loose after the hood is closed.

Reinstall the grille, and admire your finished project (Figure 7a).

SATISFACTION GUARANTEE:

If you are not happy with this product for any reason or found product to be defective in manufacturing, simply return it to Scott Drake Enterprises, Inc. within 30 days of purchase and we will replace it - no questions asked. We stand behind our products one hundred percent, so you can sit behind the wheel with pride.

* Please call Scott Drake Customer Service for a Return Authorization (RA) before returning any product. Proof of purchase and dated receipt must be present with any return. All returned products are tested and if found to be damaged by the installer, no replacement will be issued. You pay the cost to ship to us, we pay for the return shipping. Guarantee does not include any labor and/or tax charges incurred.

To place an order, or for current pricing, call your authorized Scott Drake dealer.

For a list of dealers in your area, or for any other questions about Scott Drake products, visit www.scottdrake.com or call our customer service department toll free:

1.800.999.0289

Mon - Thurs 7:00 a.m. to 5:00 p.m.
Friday 7:00 a.m. to 4:30 p.m. - PST



130 Cassia Way
Henderson, NV 89014
t: 702.853.2060
f: 702.853.2062



Figure 4a



Figure 4b



Figure 4c



Figure 5a

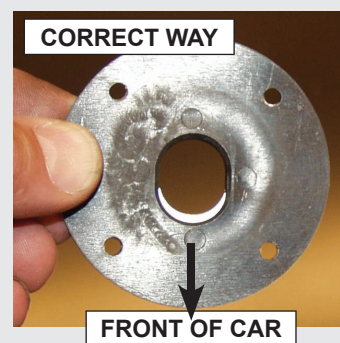


Figure 6a



Figure 7a